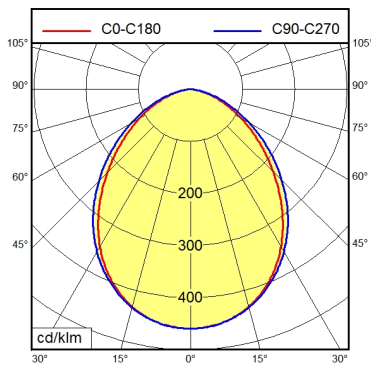
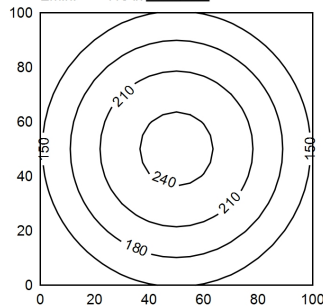




RSFPM 5/0.5 M



100 x 100 cm
Em: 181 lx
Emax: 247 lx
Emin: 113 lx
= 100 cm



Light source	LED
Work equipment	Without
Connected load	22 - 26 V; DC
Power consumption	ca. 8 W
Luminous flux	approx. 570 lm
Luminous efficiency ¹⁾	approx. 71 lm/W
Light type/-color	Daylight
Colour temperatur	approx. 5.600 K
Color rendering index	CRI ≥ 80
Light distribution	Direct; Symmetric
Beam angle	90°
Chromaticity tolerance LED	< 5 SDCM
Glare control	optical film
Luminance (L65)	≤ 13.000 cd/m ²
UGR class (4H 8H; EN 12464-1)	≤ 25
System of protection/Class	IP 68 - 1 m / IPX9; III
Technology	Switchable
Operation	External
Housing	Aluminium; Anodised; Aluminium coloured anodised Borosilicate
Light source cover	
Mains lead	Built-in plug; RSFPM 5/0.5 M
Design	mounted version
Fastening	Mounting rail; Tap hole 2xM6
Maximum ambient temperature	55 °C
Decorative contrast side parts	Metallic silver
EAN	4013330049126
Weight without/incl. packaging	ca. 1,7 kg; 2 kg
Dimensions (dimensional drawing)	A=246mm
Packaging dimensions	ca. 350 mm; 200 mm; 120 mm
Special features	Light forming; Connection on the rear side

¹⁾ For luminaires with separate control gear, the luminous efficacy refers to the luminaire head without control gear